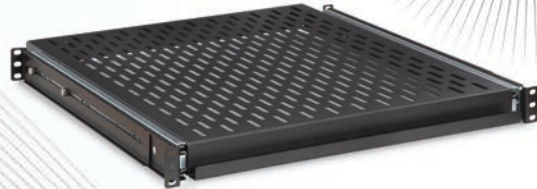


## 20" RACKMOUNTABLE SLIDING SHELVES



Kendall Howard manufactures and stocks two models of our Rackmountable Sliding Shelves (solid and vented), each holding up to 100 lbs. Our sliding rack shelves are perfect for servers, keyboards, KVMs, switches, or any other component that you want the ability to slide out for convenient rear access. The built-in front lip makes sliding the shelf in and out easy, and the 4-point adjustable mounting make this sliding rack shelf a smart addition to any network rack or cabinet.

- Easy to install
- 100 lb. weight capacity
- Mounting depth adjusts from 19" to 28"
- 17.72 maximum slide extension
- 20" depth
- 19" EIA 310-D compliant
- Made in the USA
- Limited Lifetime Warranty

### FEATURES

**Adjustable Mounting Depth** - The sliding shelf can be mounted in 4-post racks and cabinet with various depths. The 4-point mounting style can adjust from 19" to 28" deep to suit your particular network racking solution.

**18" Extension** - The ball-bearing rail extension smoothly slides out 18" to easily access the back of components and devices.

**Solid Sliding Shelf** - The innovative design allows the shelf to be flipped over and used as a small rackmountable drawer if necessary.

**Vented Sliding Shelf** - The vented pattern allows for maximum air flow which is especially helpful for heat generating equipment.

Size	1U	1U Vented
Part Number	1922-3-300-01	1922-3-400-01
Width	19"	19"
Depth	Adjustable 19" - 28"	Adjustable 19" - 28"
Height	1.72"	1.72"
UPC	879447000399	879447002195
Warranty	Limited Lifetime Warranty	Limited Lifetime Warranty
Shipping Method	FedEx Ground	FedEx Ground