

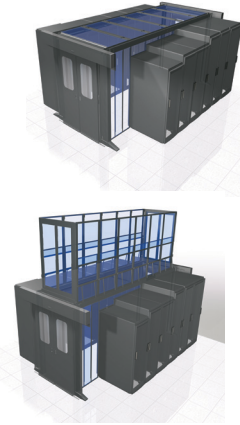
Net-Contain™ Universal Aisle Containment System



SPECIFICATION SHEET

specifications

The universal aisle containment system shall be configurable to roof containment (typically used for Cold Aisle Containment) and vertical wall containment (typically used for Hot Aisle Containment). The system shall be compatible with all major cabinet brands and sizes. This system shall be a floor mounted free structure. The system shall be comprised of wall beams, end-of-row frames, dual sliding doors, and ceiling structures for roof containment or wall structures for wall containment. The system is independent of the cabinets; hence cabinets can be rolled-in/out easily. System height shall be adjustable from 42 RU to 52 RU with expandable containment length. Tool-less blanking panels shall be used to seal the area above shorter cabinets. Unoccupied cabinet space shall be sealed with full height blanking panels. This system shall be compatible with SmartZone™ Integrated Environmental and Access Monitoring Sensors. The system shall be deployed on raised or slab floors. The system shall be capable of being added without disrupting existing in-cabinet equipment. This system shall match both current and future data center infrastructure.



product offering

The universal aisle containment approach allows you to go back and reclaim stranded capacity, restore energy efficiency, and reduce or defer CapEx by retrofitting your existing data center with an innovative offering of services, containment system, and environmental monitoring.

The Net-Contain™ Universal Aisle Containment (UAC) System will be able to retro-fit in a Brownfield (existing Data Center) or Greenfield (new Data Center) application that uses Panduit or non-Panduit cabinets. Offering includes roof containment (Cold Aisle Containment) and vertical wall containment (Hot Aisle Containment).

key features and benefits

Floor mounted, free structure	Can be deployed in new (Greenfield) or existing (Brownfield) data center applications; cabinets can be rolled in/out of position in the aisle without disturbing the structure
Height adjustable frame	Cabinets from 42 RU to 52 RU for added flexibility
Hot Aisle or Cold Aisle	Configurable to roof containment and vertical wall containment
Compatible with any brand of cabinets	Cabinets (server, switch, or storage) from differing manufacturers with differing heights, widths, and depths can be contained
Full or partial pod	Able to deploy containment if fully populated or partial/non-populated row
Raised or slab floor	Allows deployment in any type of data center
Expandable pod length	Frame support is configurable to accommodate different containment lengths; one containment system to match both your current and future containment infrastructure
Tool-less full or top of cabinet blanking panels	To seal unoccupied cabinet space in the containment To seal top of cabinet gap between frame and cabinet
Flexible design	To accommodate building columns within containment space
SmartZone™ Solutions	Integrated with Panduit® SmartZone™ Environmental Sensors for real time data monitoring (optional)

applications

The Net-Contain™ Universal Aisle Containment (UAC) System will be able to retrofit in a Brownfield (existing Data Center) or Greenfield (new Data Center) application that uses Panduit or non-Panduit cabinets. Offering includes roof containment (typically used for Cold Aisle Containment) and vertical wall containment (typically used for Hot Aisle Containment). This is an independent containment system that accommodates any manufacturer cabinets of varying heights and widths.

It can be deployed in a full or partial row. Cabinets can be rolled in and out of position without disturbing the structure. This passive system contains no moving parts, resulting in a more energy efficient solution than comparable forced-air options. This integrated system is compatible with Panduit's SmartZone™ Solution which measure, and monitor, the effectiveness of the containment system.

Net-Contain™ Universal Aisle Containment System

Net-Contain™ Integral Ceiling Structures 600mm Roofing Section

4' (1200mm) aisle width:	CURFS06F04HBB1
6' (1800mm) aisle width:	CURFS06F06HBB1

Net-Contain™ Integral Ceiling Structures 700mm Roofing Section

4' (1200mm) aisle width:	CURFS07F04HBB1
6' (1800mm) aisle width:	CURFS07F06HBB1

Net-Contain™ Integral Ceiling Structures 800mm Roofing Section

4' (1200mm) aisle width:	CURFS08F04HBB1
6' (1800mm) aisle width:	CURFS08F06HBB1

Net-Contain™ End of Row Frame for Roofing 42/45 RU High

4' (1200mm) aisle width:	CUEFRT8F04STB1
6' (1800mm) aisle width:	CUEFRT8F06STB1

Net-Contain™ End of Row Frame for Roofing 48/52 RU High

4' (1200mm) aisle width:	CUEFRT9F04STB
6' (1800mm) aisle width:	CUEFRT9F06STB1

Net-Contain™ End of Row Frame for Vertical walls 42/45 RU High

4' (1200mm) aisle width:	CUEFVT8F04STB1
--------------------------	----------------

Net-Contain™ End of Row Vertical Wall

Vertical wall, short:	C2HACER11626B1
Vertical wall, medium:	C2HACER12638B1
Vertical wall, high:	C2HACER13866B1

Net-Contain™ Vertical Wall Adapter

600mm wide:	CUVWA06S06STB1
700mm wide:	CUVWA07S07STB1
800mm wide:	CUVWA08S08STB1

Net-Contain™ Adjustable Height Vertical Walls

600mm wide	
16'- 26' :	C2HAC0611626B1
26'- 38' :	C2HAC0612638B1
38'- 66' :	C2HAC0613866B1
700mm wide	
16'- 26' :	C2HAC0711626B1
26'- 38' :	C2HAC0712638B1
38'- 66' :	C2HAC0713866B1
800mm wide	
16'- 26' :	C2HAC0811626B1
26'- 38' :	C2HAC0812638B1
38'- 66' :	C2HAC0813866B1

Net-Contain™ Vertical Wall Brace

4' (1200mm) aisle width:	CUVWB12S12STB1
--------------------------	----------------

Net-Contain™ Wall Beam 1 piece

600mm long:	CUWBSS06ST01B1
700mm long:	CUWBSS07ST01B1
800mm long:	CUWBSS08ST01B1
2400mm long:	CUWBSS24ST01B1

Net-Contain™ Wall Beam 2 pieces

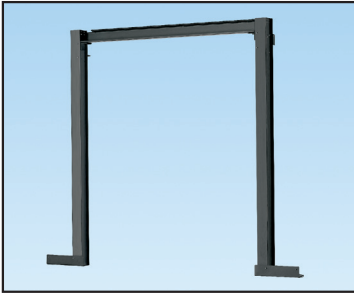
600mm long:	CUWBPS06ST02B1
700mm long:	CUWBPS07ST02B1
800mm long:	CUWBPS08ST02B1
2400mm long:	CUWBPS24ST02B1

Net-Contain™ Universal Aisle Containment System

product offering

Information required and available options to configure Universal Aisle Containment:

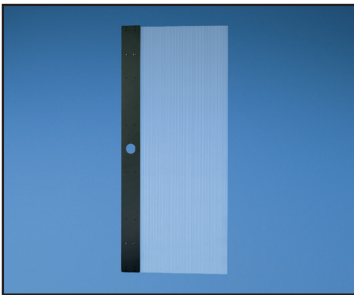
- Width of the containment aisle – 1200mm, and 1800mm
- Height of containment aisle – 42/45 RU, or 48/52 RU
- End-of-Row frame – 42/45 RU, or 48/52 RU
- Length of the aisle – unlimited, every 100mm increments (wall beams: 600mm, 700mm, 800mm, 2400mm)



End of Row Frame (two per System)

For Roof Containment:

- Based on aisle width, decide ceiling structures – 600mm, 700mm, 800mm
- Based on height of the containment, and width of the aisle, decide End-of-Row frame for roofing – (42/45RU and 48/52RU – 1200mm, 1800mm)



Roofing Sections

Net-Contain™ Full Blanking Panel 600mm Wide

42 RU high:	CUFBPR4206HBB1
45 RU high:	CUFBPR4506HBB1
48 RU high:	CUFBPR4806HBB1
52 RU high:	CUFBPR5206HBB1

Net-Contain™ Top of Cabinet Blanking Panel

600mm high x 1000mm Wide:	CUTBPR0610HBN1
------------------------------	----------------

Net-Contain™ Mid-Span Post

42 RU to 52 RU high:	CUSMPR52ST01B1
-------------------------	----------------

Net-Contain™ Mid-Span Cabinet Support

300mm long:	CUCMSS03ST01NC
600mm long:	CUCMSS06ST01NC

Net-Contain™ End of Row Dual Sliding Doors

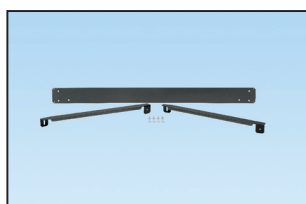
4' (1200) aisle width:	C2CACT5F04SDB1
6' (1800) aisle width:	C2CACT5F06SDB1

Net-Contain™ Universal Aisle Containment System

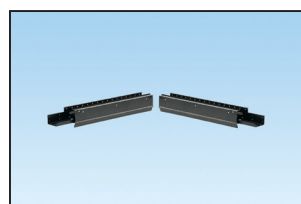
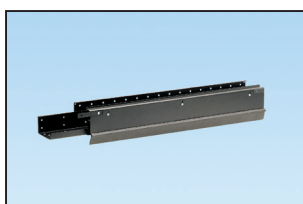
product offering (continued)

For Vertical Walls Containment:

- Based on room height, containment height, aisle length, decide vertical walls (width: 600mm, 700mm, 800mm) (Height: 16' – 26', 26' – 38', 38' – 66')
- Based on vertical wall size, decide vertical wall adapter – 600mm, 700mm, 800mm
- Based on vertical wall size, decide end of row adjustable vertical wall – 16' – 26', 26' – 38', 38' – 66'
- Determine number of vertical wall braces (1 required for every 2400mm length)
- Depending on height of the containment, and width of the aisle, decide end-of-row frame for vertical walls – (42/45 RU or 48/52 RU)



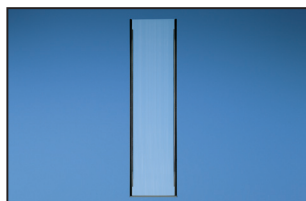
Vertical Wall Adapter



Single and Set of Two Wall Beams

Accessories:

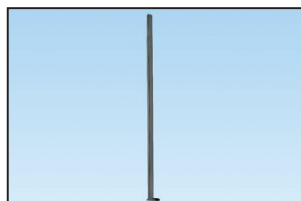
- In absence of cabinets, use full blanking panel to fill the empty space – 600mm x 42 RU, 45 RU, 48 RU, or 52 RU
- To fill the gap between cabinet and frame use top of cabinet blanking panel
- Mid-Span Post – required for every 2400mm length on partial populated row
- Mid-Span Cabinet Support – required for every 2400mm length on fully populated containment
- Cabinet to floor seal
- End of Row floor seal
- SmartZone™ Solutions (optional)



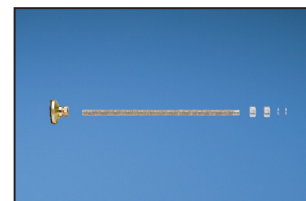
Full Length Blanking Panel



Top of Cabinet Blanking Panel



Mid-Span Post



Mid-Span Cabinet Support

WORLDWIDE SUBSIDIARIES AND SALES OFFICES

PANDUIT CANADA
Markham, Ontario
cs-cdn@panduit.com
Phone: 800.777.3300

PANDUIT EUROPE LTD.
London, UK
cs-emea@panduit.com
Phone: 44.20.8601.7200

PANDUIT SINGAPORE PTE. LTD.
Republic of Singapore
cs-ap@panduit.com
Phone: 65.6305.7575

PANDUIT JAPAN
Tokyo, Japan
cs-japan@panduit.com
Phone: 81.3.6863.6000

PANDUIT LATIN AMERICA
Guadalajara, Mexico
cs-la@panduit.com
Phone: 52.33.3777.6000

PANDUIT AUSTRALIA PTY. LTD.
Victoria, Australia
cs-aus@panduit.com
Phone: 61.3.9794.9020

For a copy of Panduit product warranties, log on to www.panduit.com/warranty

For more information

Visit us at www.panduit.com

Contact Customer Service by email: cs@panduit.com
or by phone: 800.777.3300

PANDUIT®

©2014 Panduit Corp.
ALL RIGHTS RESERVED.
RKSP141--WW-ENG
5/2014