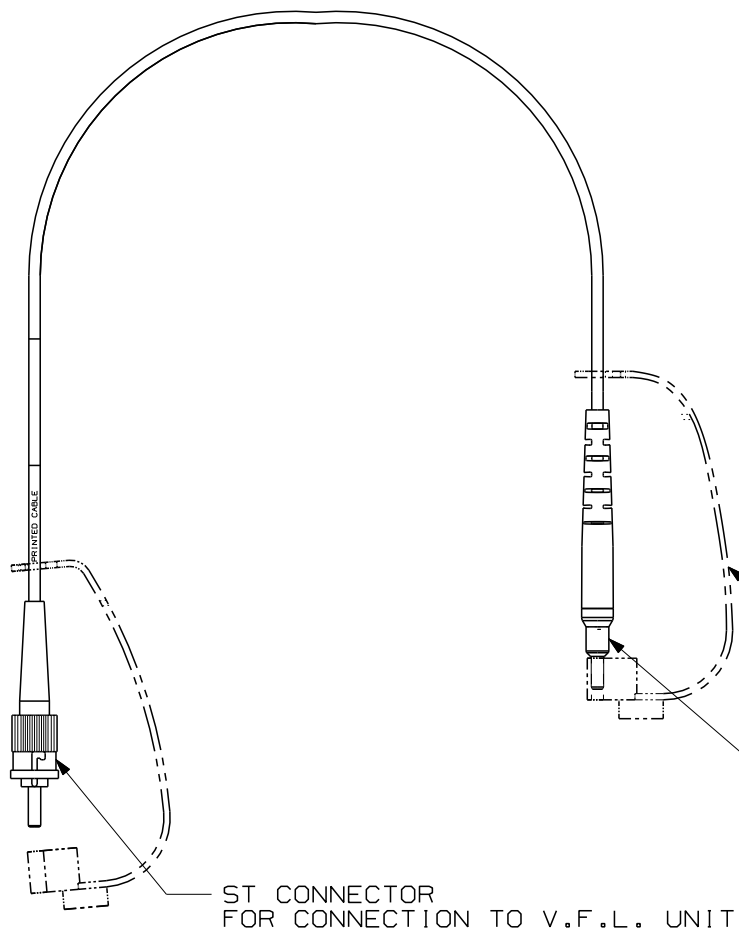


THIS COPY IS PROVIDED ON A RESTRICTED BASIS AND IS NOT TO BE USED IN ANY WAY DETRIMENTAL TO THE INTERESTS OF PANDUIT CORP.



PANDUIT PART NUMBER	DESCRIPTION
FVFLPC-1.25SMY	VFL SM 1.25mm UNIVERSAL PATCHCORD

NOTES:

1. SEE CURRENT CATALOG FOR ADDITIONAL PART NUMBER SUFFIXES TO INDICATE PACKAGE QUANTITY.
2. CONSTRUCTED WITH 9/125 MICRON SINGLEMODE CABLE AND A ZIRCONIA SPLIT SLEEVE.
3. EXTRA SPLIT SLEEVES ARE PROVIDED AS REPLACEMENTS.
4. PATCHCORD LENGTH IS 20.3 cm (8").
5. ALL MATERIALS AND COMPONENTS USED MUST MEET THE MATERIAL RESTRICTIONS OF RoHS, (EUROPEAN DIRECTIVE 2002/95/EC ON THE RESTRICTIONS OF HAZARDOUS SUBSTANCES) AS PROPOSED BY THE RoHS TECHNICAL ADAPTATION COMMITTEE.

TETHERED DUSTCAP
(2 SUPPLIED)

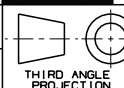
INTERFACE
FOR CONNECTION TO PRE-POLISHED
CONNECTOR WITH 1.25mm FERRULE

ST CONNECTOR
FOR CONNECTION TO V.F.L. UNIT

VFL SM 1.25mm UNIVERSAL PATCHCORD
CUSTOMER DRAWING



PANDUIT™
CORP.
TINLEY PARK, ILL 60477



THIRD ANGLE
PROJECTION
DRAWN BY
MC

DATE
12-15-04

CHK'D
MMW

ALL DIMENSIONS ARE GIVEN IN INCHES,
UNLESS OTHERWISE SPECIFIED.
DIMENSIONAL TOLERANCES ARE:
(.X) (.XXX) ± .010 (0.3)
(.XX) ± .03 (0.8) ANGLES

REVIEW DRAWING NUMBERS

DRAWING FILENAME
M01893AL_DC-Y_01B.prt
SCALE
NONE

PART NO.
FVFLPC-1.25SMY

DRAWING NO.
01893-58
SIZE
A

REV	DATE	BY	CHK	DESCRIPTION	ECN	R	CUST	SUP	OTH
2	01-18-07	MC		RELEASED TO PRODUCTION	01893-58				